

# HIDROMEK

HMK  
200W  
200W MH  
**GEN**  
SERIES





**HMK 200W**  
EXCAVATOR

**GEN**  
SERIES



## HEAVY DUTY TYPE

HMK 200W has been designed by HIDROMEK engineers after careful evaluation of working conditions and operator demands and has been released on the market afterward as a wheeled excavator that meets all expectations of users. All fabricated parts including boom, arm, bucket, undercarriage, lower and upper frames have been designed and produced as heavy duty type. HMK 200W offers its operator maximum efficiency by providing trouble-free and continuous operating performance even in the toughest of working conditions. When such rigorous care at the design stage of HMK 200W is combined with worldwide approved components and state-of-the-art production technologies, the outcome has been a high performance, durable, comfortable, and well-balanced product with low maintenance and operation costs.



## CAB

HMK 200W excavator cabin has been designed to allow the operator to work comfortably even under the hardest conditions.

Cabin entrance is large enough to enable the operator to enter the cab easily with plenty of clearance. Opening windscreen is designed to give the operator a perfect visibility. It is possible to open the windscreen by sliding it towards the roof. Rear window may be removed and kept under the operator seat. Other features enhancing operator's comfort are the ergonomic seat and front console. The standard operator seat of the HMK 200W can be adjusted in 9 different positions and is designed to enable operator to work without fatigue and comfortably with high performance for long hours. Besides, the joystick console and seat can move independently from each other which lets the operator to adjust the most suitable position for him.

The seat is equipped with seat belt as a safety precaution. The cab is supported by 6 silicon viscose mounts that dampen the effects of noise, shock and vibrations regardless of working conditions of the machine and the optional attachment on it. Also a high capacity air conditioning system is located on the cab to create the optimum working environment for the operator.



## ENGINE

# “An Extraordinary Engine”



---

### **An extraordinary engine...**

The Isuzu engine fitted in the HMK 200W is specially developed for excavator applications. It is a turbo diesel engine, complies with the U.S and EU Emission Regulations, with 4 cylinders, 4 cycles, water-cooling, turbocharger and intercooler. High performance, long life and reliability of the engine under all working conditions have been proved in many different markets.

### **Low fuel consumption...**

The direct fuel injection and intercooler features not only provide less fuel consumption but also increase the power and torque produced by the engine by providing more efficient combustion.

### **More than standard...**

HIDROMEK always offers more than what is expected from any construction equipment. Some of the standard features offered along with HMK 200W model are:

- Air pre-heating function to start-up engine easily in cold weather conditions
- Diesel fuel/water separator
- No disturbance for the environment and operator due to low exhaust gas emission and sound level.



## “Reinforced Heavy Duty Type Construction”



### SUB-FRAME & UNDERCARRIAGE

#### Lower - Chassis

**Chassis** : Box cross-sectional, reinforced lower-chassis with dozer blade at the rear and support legs at the front are standard.

**Axles** : Rear axle is fixed to the lower-chassis. Front axle is connected to the lower-chassis with pins for oscillation and is fixed with locking cylinders at working position.

**Tires** : 10.00 - 20 (16 ply)

#### Steering Wheel System

Orbitrol type steering wheel system controls the front wheels through cylinders. Front axle oscillation angle is  $(\pm) 8^\circ$  and minimum turning radius is 6,900 mm.

#### Travel System

Maximum traction, long life and high performance are achieved through latest technology transmission, axles and travel motors produced by world renowned suppliers. There is a safety

system in the travel motor to prevent the machine from getting out of control when driving downhill. Moreover, the travel motor is protected from external effects by means of a sheet metal cover.

## TECHNICAL SPECIFICATIONS

### Opera Control System

- Perfect control
- Fuel economy
- Long component life
- Low noise level and exhaust gas emission
- Operator comfort
- Warning and protection (security) features
- Malfunction / fault indication feature
- Auxiliary functions

Opera Control System ,consists of 4 power modes and 3 working modes, helps operator to choose the most suitable working conditions in accordance with requirements of work through perfect matching with diesel engine and hydraulic pump.

#### MODE SELECTIONS

##### A-Power Mode Selection

POWER MODE	
F (Sensitive Mode)	This mode is used for light works requiring sensitive movements
E (Economy Mode)	This mode is for light work in which low fuel consumption is desired.
P (Power Mode )	This mode is for general digging and loading works.
HP (High Power Mode)	This mode is for heavy and high speed required

##### B- Working Mode Selection

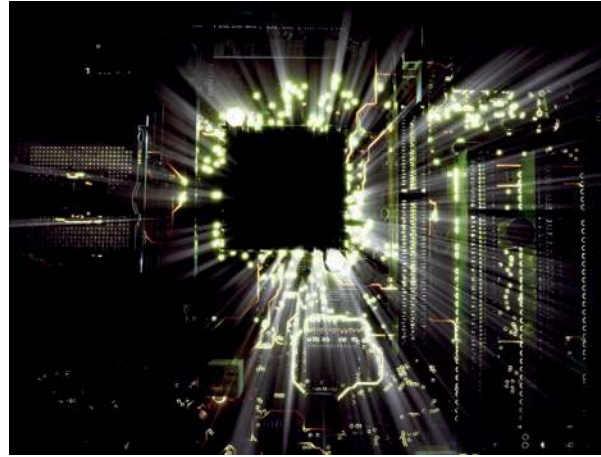
WORKING MODE	
D (Digging Mode)	It is designed for normal digging operations.
B (Breaking Mode)	It is designed for breaking operations.
O (Optional attachment Mode)	It is designed to work with optional attachment.

#### WARNING AND PROTECTION FEATURES

##### Continuous Monitoring:

Opera Control System, continuously monitors the most important parameters of machine and warns the operator in case of any abnormality in three ways:

- Audio warning
- Warning lights
- Indicators



##### Overheating Prevention Function:

If engine water temperature and hydraulic oil temperature exceeds certain limits, electronic control system decreases the pump flow rate and engine rpm to enable the machine work continuously.

##### Automatic preheating :

Automatic preheating provides reaching machine to optimum working temperatures by measuring air intake temperature , cooling water temperature and hydraulic oil temperature of diesel engine. Machine control unit removes engine rpm from idling to 1200 rpm when engine cooling water is lower than 30°C or hydraulic oil temperature is lower than 0°C and stay on this rpm until warm up . By this way early wearing of main components beginning engine in the first place is prevented. However if there is emergency and machine is required to be moved quickly , such function can be cancelled by pressing button on display panel.

##### Automatic Malfunction Indication:

When machine displays any malfunction, code representing such malfunction appears on display panel for warning purpose.

##### Malfunction Messages Memory:

Opera Control System has feature of keeping occurred malfunctions in the machine in its memory.

##### Fuel filter Congestion Warning:

Notifies pollution of fuel filter to operator by view.

##### Manuel Mode Selection:

In case of any malfunction in control system of the machine, it is possible to switch to manual mode and continue operation by means of a button located near fuse box. Hydraulic pump flow rate is fixed and also engine rpm can be set between 900 rpm and maximum rpm manually.

##### Component Information and Main Setting Values:

Information regarding serial numbers of the components of the machine can be loaded on the control unit and may be recalled when required. It is also possible to read the required malfunction information on the display panel through the control unit during fault searching.

##### Program Loading and Modification:

There are computer connection ports on control unit of the machine.By means of such ports, programs of which parameters are either the same or different can be loaded on the machine.

#### AUXILIARY FEATURES

##### Automatic Powerboost:

When more power than normal working conditions is needed, electronic control system allows working at high performans through increasing system pressure.

##### Automatic Powershift:

If more power is needed during digging and travel , required power is obtained by mounting engine rpm and pump flow rate above setup value

##### Automatic Idling:

While levers are in the middle position, in case of no movements at levers, electronic control system decreases engine rpm to 1200 rpm and then decrease to idling in order to prevent redundant fuel consumption. Automatic Idling function can be activated also at any time determined by operator. When operator touches to lever , engine rpm and pump flow rate of previously selected mode is restored . This function can be canceled by operator if he desires. By this way desired power from engine can be obtained.

##### Condition Information:

Instant, hourly and total fuel consumption information of machine can be monitored. Also , many parameters such as; battery voltage , engine load, pump pressures , cooling water temperature, and hydraulic oil temprature can be monitored

##### Maintenance Information:

There is warning system that informs operator about periodic maintenance time automatically. Also parameters related with machine maintenance can be monitored on control panel.

##### Operation Hours:

Detail working hours of machine , such as working hours, travel hours, attachment hours , breaking hours, are kept on the memory.

##### Anti-Theft System:

Anti-theft system is set up by defining private code for each operator.

##### Fuel Consumption:

Fuel consumption can be followed on remote control panel in real time and statistical information can be obtained.

##### Language Selection:

Selection of multi-language on the remote control panel.





Since the very first phase of its design, the new generation GEN Series Excavators has been developed so that the user could control the machine with an extraordinary ease, in an environment of total comfort, feeling himself like in his own office.

That is why, GEN - the new generation of excavators HÍDROMEK, for first time in its class, has been equipped with OPERA (HÍDROMEK Operator Interface).

OPERA user interface, especially developed for the GEN series HÍDROMEK excavators, which integrates all the control devices on an aesthetically designed and ergonomically located console. The system consists of a high resolution (HD) coloured TFT screen, an Electronic Control Unit and the Opera Control Unit.

With OPERA it is extraordinary easy to manage functions such as:

- Engine RPM control
- Navigate in the menus
- Choose the most appropriate working mode
- Control the lights and wipers
- Manage radio/MP3
- Start-Stop the engine to ensure maximum fuel economy.
- Control of the cameras – rear view and on the arm (optional)
- Monitoring the machine conditions, such as hydraulic pressure, engine coolant and hydraulic oil temperature, turbo boost pressure, fuel pressure, atmosphere pressure and others.
- Error Codes
- Times of work - as a time of excavating, work with attachments (breakers etc), travel, etc.
- Time to the next maintenance among others.



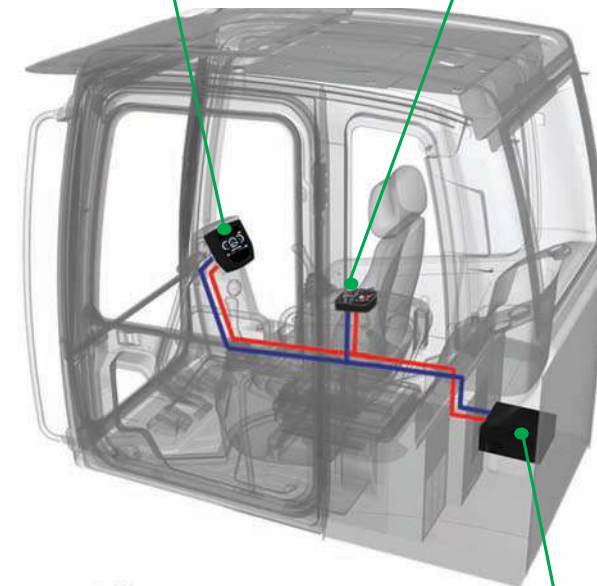
## EXCAVATOR



Coloured TFT Display



Instrument Panel



Electronic Control Unit



## HYDRAULIC SYSTEM

### Features:

- Easy to control
- High efficiency
- Generation of required flow rate when needed (negative control)
- Continuous control of power generation depending on increasing load
- Maximum performance under all sorts of working conditions due to functional power modes
- Priority allowance in attachment movements
- Regeneration of flow rate in main control valve

### Main Hydraulic Pump

Machine performance and pump life have been maximized by using two axial pistons and variable displacement hydraulic pumps from Kawasaki, a worldwide leading hydraulic pump manufacturer. It is possible to generate the necessary flow rate when required thanks to the negative control feature. By matching the power generated from diesel engine and the power required by the hydraulic pump under increase load, engine stalls is prevented. The best matching of the engine and pump flow rate is achieved with the power mode modulation depending on working conditions. By this way;

- High efficiency
- High quality
- Long and trouble-free operating life is achieved.

### Main Control Valve

The main control valve ensures sensitive and vibration free operation in each combined movement. The operator is able to focus only on his work since the priority at the arm, boom and swing movements are provided automatically by the control valve, thus maximizing efficiency. The regenerative system prevents cavitations during boom, arm



and bucket movements and increases both the life of the hydraulic system and speed of the machine. Holdin valves on the boom and arm are supplied as standard equipments in order to balance the interior leakage between spool and body so the potential leakage problem at the attachments is avoided. Thanks to the two-staged main relief valve, it is possible to increase the power whenever is required. Inside the main control valve, there is straight travel valves. Due to the featured structure of the main valve block, it is possible to join the oil produced by both pumps within the valve group. There is no need for an external pipe or hose for such operation.

An additional valve section is available for breaker or other optional attachments.

### Swing Hydromotor and Gearbox

An axial piston type hydromotor with high torque is used together with a heavy duty type gearbox.

The hydromotor features shock absorbing valves specially designed to provide smooth and vibration free swing

movement. The braking of the swing movement is provided by an oil type spring-driven park brake system.

### Other features

The hydraulic accumulator which enables lowering of the attachments in case of emergency (i.e. diesel engine or main hydraulic pump failure) is located in the pilot line.

The advanced hydraulic system provides easy maintenance and thus decreases spare part costs.

Hydraulic cylinders are designed with a cushioning system to provide a vibration and shock free operation.

The entire hydraulic system is fitted with high capacity filters so ensure absolute cleanliness.

Different types of breakers may be fitted by selecting desired flow rate and pressure on the control unit.



**ENGINE**

Emission Class	: Stage III-A ( Tier 3)	: Stage III-B ( Tier 4 interim)
Brand, Model	: ISUZU AI-4HK1X	: ISUZU AI-4HK1X
Type	: Water cooled diesel engine, 4 cycles, 4 cylinders, line-type, direct injection, turbocharger and intercooler	: Water cooled diesel engine, 4 cycles, 4 cylinders, line type, direct injection, turbocharger and intercooler
Power	: 162 HP (120.7 kW) at 2000 rpm SAE J1349 (Net)	: 162 HP (120.7 kW) at 2000 rpm SAE J1349 (Net)
	: 172 HP (128.4 kW) at 2000 rpm SAE J1995 (Gross)	: 172 HP (128 kW) at 2000 rpm SAE J1995 (Gross)
Maximum Torque	: 656 Nm at 1500 rpm (Net)	: 653 Nm at 1500 rpm (Net)
	: 677 Nm at 1500 rpm (Gross)	: 674 Nm at 1500 rpm (Gross)
Displacement	: 5193 cc	: 5193 cc
Bore x Stroke	: 115 mm x 125 mm	: 115 mm x 125 mm
This new engine complies with the Emission Regulations U.S EPA Tier III and EU Stage III-A		This new engine complies with the Emission Regulations U.S EPA Tier 4 interim and EU Stage III-B

**HYDRAULIC SYSTEM**

Main Pump	
Type	: 2 axial piston type pumps with double variable displacement and inclined plate
Max. Flow Rate	: 2 x 234 lt/min
Pilot Pump	: Gear type, 20 lt/min (10 cc/rev)
Working Pressures	
Cylinders	: 330 kgf/cm <sup>2</sup>
Power Boost	: 360 kgf/cm <sup>2</sup>
Travel	: 360 kgf/cm <sup>2</sup>
Swing	: 240 kgf/cm <sup>2</sup>
Pilot	: 40 kgf/cm <sup>2</sup>
Cylinders	
Boom	: 2 x ø 125 x ø 85 x 1,300 mm
Arm	: 1 x ø 140 x ø 110 x 1,640 mm
Bucket	: 1 x ø 125 x ø 85 x 1,060 mm

**SWING SYSTEM**

Motor	: Axial piston motor with integrated super shock absorbing valve, with fixed displacement and inclined plate
Reduction	: 2 stage planetary gear type v
Swing Brakes	: Hydraulic, disc type with warning
Swing Speed	: 10.8 rpm

**LUBRICATION**

A central lubrication system is available in order to lubricate difficult-to-reach points such as boom and arm.

**CAB**

- Improved operator's all round visibility
- Increased cabin internal space
- Use of six viscomount cabin mountings that dampen the vibrations
- High capacity A/C
- Cooled storage box
- Glass holder, book and object storage pockets
- Pool type floor mat
- Improved operator's comfort through versatile adjustable seat
- Ergonomically redesigned cabin through relocated switch board, and re-styled travel pedals and levers

**ELECTRICAL SYSTEM**

Voltage	: 24 V
Battery	: 2 x 12 V / 100 Ah
Alternator	: 24 V / 50 A
Starting Motor	: 24 V / 5,0 kw

**FILLING CAPACITIES**

Fuel Tank	: 330 L Engine Oil	: 20.5 L
Hydraulic Tank	: 158 L Swing Reduction Gear	: 5 L
Hydraulic System	: 315 L Transmission	: 2.9 L
Engine Cooling Sys	: 29.3 L Front/Rear Axle	: 14.6/18 L

**TRAVEL AND BRAKES**

Travel	: Fully hydrostatic
Travel Motor	: Piston motor with variable displacement.
Reduction	: Planetary gear system with 2 stages
Travel Speed	
High	: 32 km/h
Low	: 8 km/h
Max Traction	: 10.500 kgf
Gradeability	: 29° (56%)
Parking Brake	: Hydraulic, disc type with automatic warning
Service Brake	: Fully hydraulically operating disc type brakes with spring return, independent for front and rear axles.

**OPERA CONTROL SYSTEM**

• Easy-to-use control panel and menu	• Maintenance information and warning system
• Improved fuel economy and productivity	• Overheat prevention and protection system without interrupting the work
• Maximum efficiency by selection of power and work modes	• Real time monitoring of operational parameters such as pressure, temperature, engine load
• Automatic electric cut-off	• Selection of multi-language on control panel.
• Automatic powerboost switch-on and switch-off	• Automatic powershift to improve performance
• Auto-Idle and automatic deceleration system	• Error mode registry and warning system
• HIDROMEK Smartlink (Optional)	• Anti-theft system with personal code
• Automatic preheater	• Possibility to register 26 different operating hours
	• Rear-view, arm-view camera (Optional)

**WEIGHT**

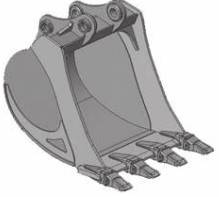
Standard machine operating weight (200W) (Dozer Blade and Outriggers)	: 22.150 kg
Standard machine operating weight (200W) (Front and Rear Outriggers)	: 22.370 kg
Standard machine operating weight (200W MH)	: 24.700 kg



**ACCESSORIES**

**STANDARD BUCKET**

**OPTIONAL BUCKET SELECTION DIAGRAM**

HEAVY DUTY TYPE

		Width	1.110 mm
		Capacity	0.90 m <sup>3</sup>
		Weight	740 kg
		Number of teeth	4
		ARM	2.92 m
*2.40 m	B		

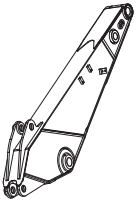
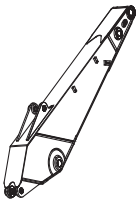
												
600 mm	750 mm	900 mm	1050 mm	1200 mm	1400 mm	600 mm	750 mm	900 mm	1050 mm	1110 mm	1400 mm	
0.40 m <sup>3</sup>	0.54 m <sup>3</sup>	0.68 m <sup>3</sup>	0.82 m <sup>3</sup>	1.00 m <sup>3</sup>	1.20 m <sup>3</sup>	0.40 m <sup>3</sup>	0.54 m <sup>3</sup>	0.68 m <sup>3</sup>	0.82 m <sup>3</sup>	0.90 m <sup>3</sup>	1.20 m <sup>3</sup>	
510 kg	570 kg	640 kg	690 kg	800 kg	950 kg	510 kg	570 kg	640 kg	690 kg	740 kg	870 kg	
3	3	4	4	5	5	3	3	4	4	4	5	
A	A	A	A	A	B	A	A	A	A	A	B	
A	A	A	A	B	A	A	A	A	A	A	C	

\* Standard

Note: Single radius buckets and rock type buckets are available

- A- Material density less than 2.000 kg/m<sup>3</sup>
- B- Material density less than 1.800 kg/m<sup>3</sup>
- C- Material density less than 1.500 kg/m<sup>3</sup>
- D- Material density less than 1.200 kg/m<sup>3</sup>

**BREAKOUT FORCES**

			
SAE	Arm length	*2.40 m	2.92 m
	Bucket digging force (power boost)	13.900 (15.200) kgf	13.900 (15.200) kgf
	Arm breakout force (power boost)	12.800 (14.000) kgf	11.200 (12.300) kgf
ISO	Bucket digging force (power boost)	15.800 (17.200) kgf	15.800 (17.200) kgf
	Arm breakout force (power boost)	13.200 (14.400) kgf	11.600 (12.600) kgf

\* Standard

**WARNING**

- Optional attachment and accessory standards offered with machines may differ according to countries.
- Please consult your authorized dealer to provide attachments and accessories.

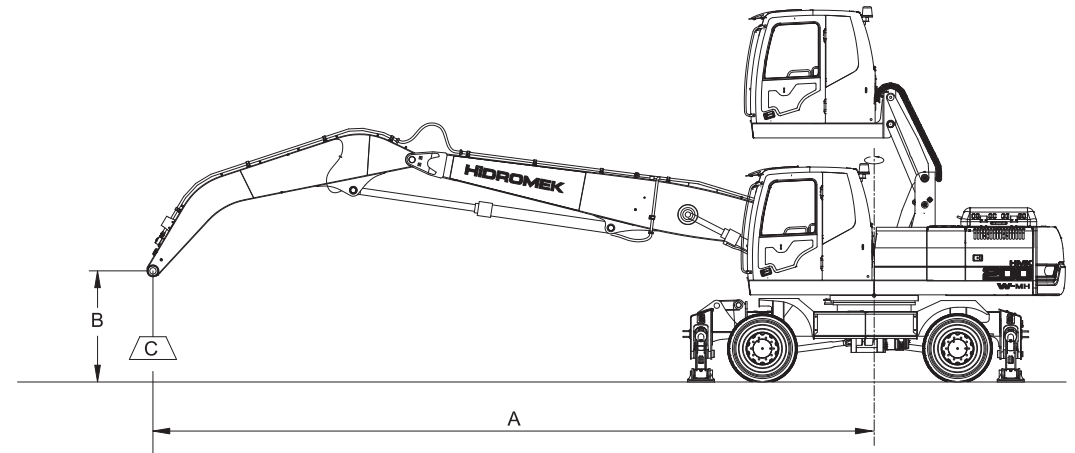
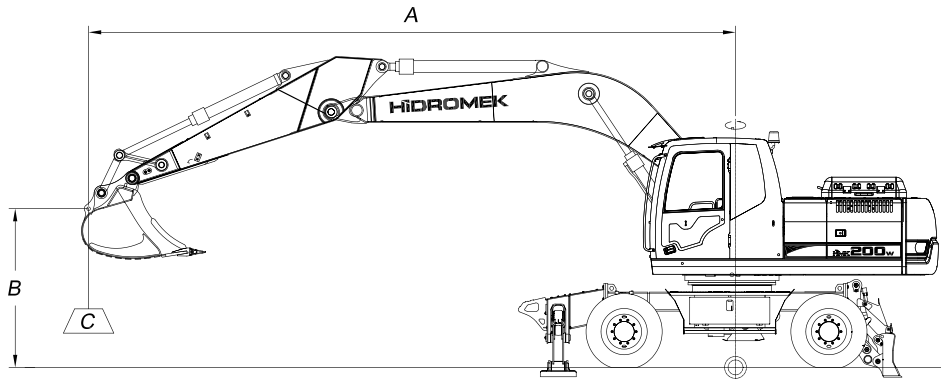


# LIFTING CAPACITIES

# EXCAVATOR

HMK 200W Boom: 5.6 m, Arm: 2.40 m, Bucket: 0.90 m <sup>3</sup> (SAE), Front Outrigger/Rear Dozer Blade													↑ :Front	↔ : Side
A, m	Load Unit	1.5		3.0		4.5		6.0		7.5		Maximum Reach		
B, m		↑	↔	↑	↔	↑	↔	↑	↔	↑	↔	↑	↔	R, m
7.5	kg							*4050	*4050			*4050	*4050	6.06
6.0	kg							*4000	*4000			*3900	*3900	7.16
4.5	kg					*5250	*5250	*4550	*4550	*4250	3750	*3950	3450	7.82
3.0	kg			*8700	*8700	*7000	*7000	*5350	5200	*4600	3600	*4200	3100	8.16
1.5	kg					*8600	7650	*6150	4900	*5000	3400	*4650	2950	8.20
0 (ground)	kg			*7550	*7550	*9500	7300	*6750	4650	*5300	3300	*5000	3000	7.95
- 1.5	kg	*8050	*8050	*12450	*12450	*9600	7200	*6950	4600			*5400	3350	7.40
- 3.0	kg	*12950	*12950	*13100	*13100	*8950	7300	*6450	4650			*5850	4200	6.44
- 4.5	kg			*10200	*10200	*7000	*7000					*6350	*6350	4.86

HMK 200W MH Boom: 6.6 m, Arm: 4.6 m, Front Outrigger/Rear Outrigger													↑ :Front	↔ : Side						
X, m	Load Unit	3.0		4.5		6.0		7.5		9.0		10.5		Maximum Reach						
H, m		↑	↔	↑	↔	↑	↔	↑	↔	↑	↔	↑	↔	↑	↔	R, m				
10.5	kg							*6500	*6500					*5700	*5700	6.99				
9.0	kg							*6200	*6200	*5650	*5650			*5150	4750	8.51				
7.5	kg							*6250	*6250	*5650	*5650	*5150	4350	*4850	3900	9.56				
6.0	kg							*6600	*6600	*5800	5800	*5150	4300	*4700	3450	10.28				
4.5	kg							*9000	*9000	*7200	*7200	*6050	5650	*5250	4250	*4600	3300	*4450	3200	10.74
3.0	kg							*10400	*10400	*7850	7600	*6350	5450	*5400	4150	*4550	3250	*4250	3050	10.97
1.5	kg							*11300	*11300	*8300	7250	*6550	5250	*5400	4050	*4450	3200	*4050	3000	11.00
0 (ground)	kg	*3650	*3650	*11000	10850	*8300	7000	*6500	5100	*5250	3950	*4100	3200	*3800	3050	10.82				
- 1.5	kg	*5150	*5150	*10150	*10150	*7750	6850	*6100	5000	*4800	3900			*3500	3200	10.41				
- 3.0	kg			*8300	*8300	*6600	*6600	*5200	5000	*3850	*3850			*3000	*3000	9.76				



## Notes

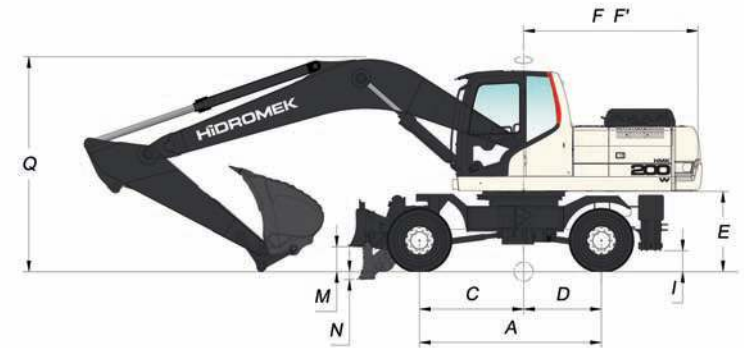
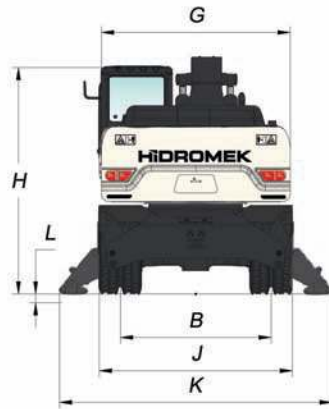
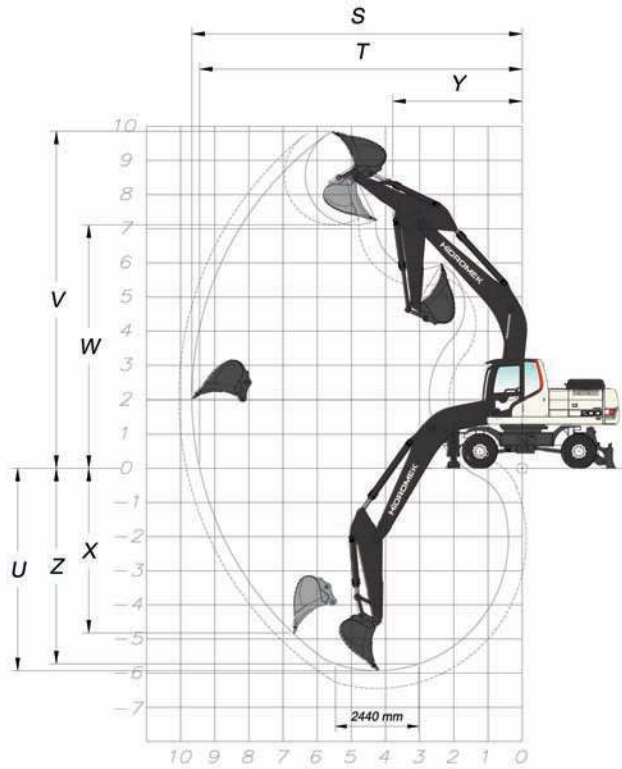
1. Lifting capacities are according to SAE J1097 and ISO 10567.
2. Load point is on the bucket.
3. Lifting capacity cannot exceed 75% of tip over capacity or 87% of total hydraulic capacity.
4. Values marked with ( \* ) are limited by hydraulic capacity.
5. Not included polyp attachment

## WARNING

HIDROMEK has the right to modify the specifications and design of the model indicated on this brochure without prior notice.

- A Load Radius
- B Load Point Height
- C Lifting Capacity

**DIMENSIONS**



**GENERAL DIMENSIONS**

Boom Dimension	5.600 mm	
Arm Dimension	*2.400 mm	2.920 mm
A - Axle Distance	2.850 mm	
B - Thread	1.874 mm	
C - Rotation Axis – Front Axle Distance	1.500 mm	
D - Rotation Axis – Rear Axle Distance	1.350 mm	
E - Upper Chassis to Ground Clearance	1.290 mm	
F - Counterweight Distance	2.780 mm	
F' - Countweight Turning Radius	2.800 mm	
G - Upper Frame Width	2.500 mm	
H - Cab Height	3.350 mm	
I - Outrigger Ground Clearance	335 mm	
J - Width at Tires	2.480 mm	
K - Outrigger Width (Overall)	3.800 mm	
L - Outrigger Digging Depth	130 mm	
M - Dozer Blade Ground Clearance	370 mm	
N - Dozer Blade Digging Depth	135 mm	
O - Overall Length / Travel	9.660 mm	9.670 mm
P - Overall Length/ Transport	9.570 mm	9.570 mm
Q - Boom Height / Travel	3.570 mm	3.790 mm
R - Boom Height / Transport	3.330 mm	3.320 mm

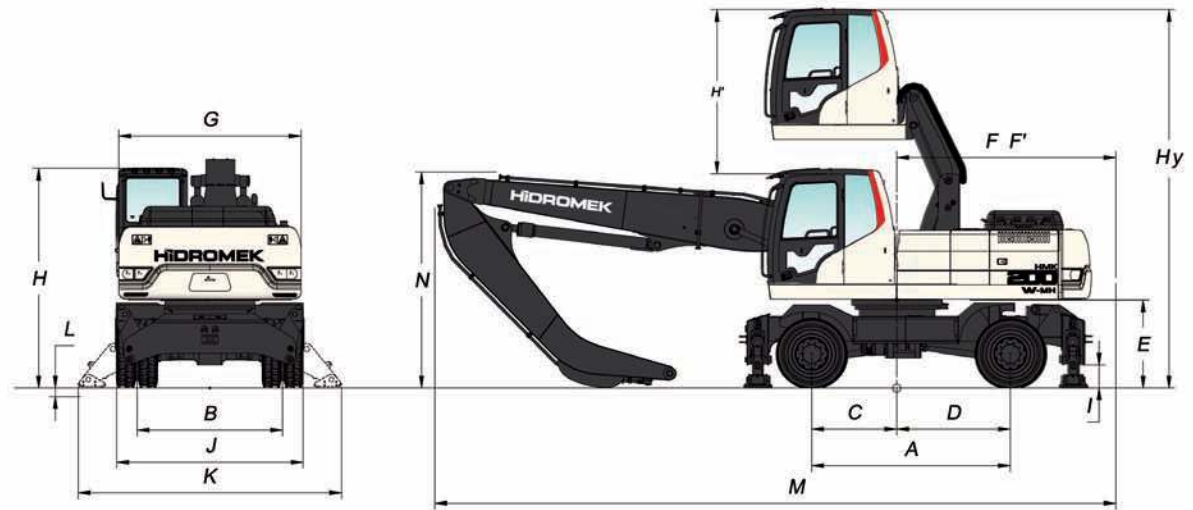
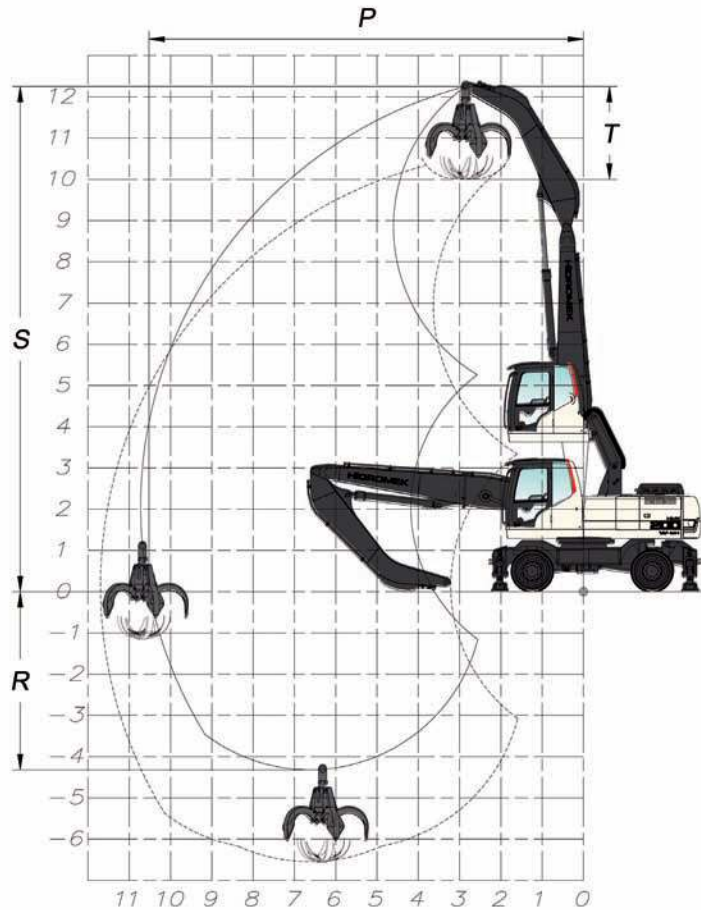
\* Standard

**WORKING DIMENSIONS**

Boom Dimension	5.600 mm	
Arm Dimension	*2.400 mm	2.920 mm
S - Maximum Digging Reach	9.420 mm	9.780 mm
T - Maximum Digging Reach at Ground Level	9.200 mm	9.560 mm
U - Maximum Digging Depth	5.790 mm	6.310 mm
V - Maximum Digging Height	9.930 mm	9.880 mm
W - Maximum Dumping Clearance	7.180 mm	7.200 mm
X - Maximum Vertical Didding Depth	4.570 mm	4.630 mm
Y - Minimum Swing Radius	3.240 mm	3.170 mm
Z - Maximum Digging Depth (2440 mm level)	5.580 mm	6.120 mm

\* Standard





**GENERAL DIMENSIONS**

Boom Dimension	6.600 mm
Arm Dimension	4.600 mm
A - Axle Distance	2.850 mm
B - Thread	1.874 mm
C - Rotation Axis – Front Axle Distance	1.500 mm
D - Rotation Axis – Rear Axle Distance	1.350 mm
E - Upper Chassis to Ground Clearance	1.290 mm
F - Counterweight Distance	2.780 mm
F' - Counterweight Turning Radius	2.800 mm
G - Upper Frame Width	2.500 mm
H - Cab Height	3.350 mm
H' - Cab Rising Height	2.400 mm
Hy - Total Cab Height	5.620 mm
I - Outrigger Ground Clearance	335 mm
J - Width at Tires	2.480 mm
K - Outrigger Width (Overall)	3.800 mm
L - Outrigger Digging Depth	130 mm
M - Overall Length / Transport	9.720 mm
N - Boom Height / Transport	3.430 mm

**WORKING DIMENSIONS**

Boom Dimension	6.600 mm
Arm Dimension	4.600 mm
O - Maximum Reach Distance	11.020 mm
P - Maximum Reach at Ground Level	10.820 mm
R - Maximum Depth	4.400 mm
S - Maximum Height	12.320 mm
T - Polyp-Grab and Equipment Height	2.230 mm

DETAILS







Special Equipment List

- 2.92 m arm
- Various size buckets
- Automatic lubrication system
- Rotator line
- Boom safety valve
- Arm safety valve
- Overload warning system
- Hydraulic breaker
- Hydraulic quick coupler
- Ripper
- Rotator
- Windscreen protective netting
- Headlights
- HIDROMEK Smart Link
- Rotational moving hydraulic shear installation

Standard Equipment List

- Radio/MP3
- Air conditioner
- Cab heating system
- ROPS/FOPS approved cabin
- Computer connection port
- Fuel transfer pump
- Front air filter
- Double air filter
- Automatic idling
- Engine pre-heating facility
- Overheating, low engine pressure, air filter clogging indicators
- Battery charge warning system
- Hydraulic breaker line
- Camera
- Tool box
- Working light on counterweight
- Additional working lamp at the front
- Additional working lamp at the rear



# HIDROMEK

[www.hidromek.com](http://www.hidromek.com)

**HIDROMEK**  
**WEST**

Address: C/De la Maquina 14, Poligono Industrial El Regás, 08850 – Gavá (Barcelona)  
Tel: +34 93 638 84 65 Fax: +34 93 638 07 14  
Mail: [contact@hidromek.es](mailto:contact@hidromek.es)

**HIDROMEK**  
**RUS**

Address: 72, Zhivopisnaya str., village Oktyabrskiy, Krasnodar, Russia, 350032  
Tel: +7 861 290 3007 Mail: [Hidromekrus@hidromek.ru](mailto:Hidromekrus@hidromek.ru)

**Hidromek Construction Equipment (Thailand) Ltd.**

Hidromek Construction Equipment (Thailand) Ltd.  
Address: Amata Nakorn Industrial Estate Phase 7, 700/669 Moo 1, T.Phanthong A.Phanthong, Chonburi 20160, Thailand  
Tel: +66 38 447 349 Fax: +66 38 447 355

#### Head Office

Ayaş Yolu 25. Km 1. Organize Sanayi Bölgesi Osmanlı Caddesi, No: 1  
06935 Sincan - ANKARA/TURKEY  
Telephone: +90 312 267 12 60 Fax: +90 312 267 12 39  
Mail: [export@hidromek.com.tr](mailto:export@hidromek.com.tr)

Your Local Distributor:

#### Warning

HIDROMEK has the right to modify the specifications and design of the model indicated on this brochure without prior notice