



NEW!

ENGINE

Model	: ISUZU AR-4HK1X
Type	: Water cooled diesel engine, 4 cycles, 4 cylinders, line-type, direct injection, turbocharger and intercooler
Power	: 172 HP (128 kW) @ 2000 rpm / SAE J1995 (Gross) : 162 HP (121 kW) @ 2000 rpm / SAE J1349 (Net)
Max. Torque	: 670 Nm @ 1600 rpm (Gross) : 649 Nm @ 1600 rpm (Net)
Displacement	: 5193 cc
Bore and Stroke	: 115 mm x 125 mm
This new engine complies with the Emission Regulations U.S EPA Tier 4 Final and EU Stage IV	

LOWER STRUCTURE (CHASSIS)

Chassis	: Box shaped, reinforced lower chassis, front dozer blade and rear outriggers (stabilizers) as standard figures.
Axles	: The pivot pin mounted front axle allows two options: 8° in each direction for best matching conditions, or could be locked at any desired position for perfect stability.
Tires	: 11,00 - 20 (16 pr)

CAB

- Improved operator's all round visibility
- Increased cabin internal space
- Use of six viscomount cabin mountings that dampen the vibrations
- High capacity A/C
- 8" touch TFT screen
- Opera Control System
- Cooled storage room
- Glass holder, book and object storage pockets
- Pool type floor mat
- Improved operator's comfort through versatile adjustable seat

STEERING SYSTEM

The "orbitrol" type steering system controls a steering cylinder located on the front axle. Minimum turning radius is 6.800 mm.

TRAVEL AND BRAKERS

Travel	: Fully hydrostatic
Travel Motors	: Axial piston type
Reduction	: 2 stage planetary gear
Travel Speed	
High Speed	: 30 km/h
Low Speed	: 7,5 km/h
Max. Drawbar Pull	: 11.080 kqf
Gradeability	: 29° (%58)
Parking Brake	: Hydraulic, disc type with automatic warning
Service Brake	: Fully hydraulically operating disc type brakes with spring return, independent for front and rear axles.

LUBRICATION

Centralized lubrication system is provided for lubrication all difficult-to-reach parts on the components, such as boom and arm

HYDRAULIC SYSTEM

Main Pump	
Type	: 2 axial piston type pumps with double variable displacement and inclined plate
Max. Flow Rate	: 2 x 233 L/min
Pilot Pump	: Gear type, 20 L/min
Working Pressures	
Cylinders	: 350 kgf/cm ²
Power Boost	: 370 kgf/cm ²
Travel	: 360 kgf/cm ²
Swing	: 305 kgf/cm ²
Pilot	: 40 kgf/cm ²
Cylinders	
Boom	: 2 x ø 120 x ø 85 x 1.300 mm
Arm	: 1 x ø 135 x ø 95 x 1.520 mm
Bucket	: 1 x ø 120 x ø 85 x 1.060 mm

OPERA CONTROL SYSTEM

- Easy-to-use control panel and menu
- Improved fuel economy and productivity
- Maximum efficiency by selection of power and work modes
- Overheat prevention and protection system without interrupting the work
- Automatic powerboost switch-on and switch-off
- Automatic electric power-off
- Maintenance information and warning system
- Error mode registry and warning system
- Ability to adjust hydraulic flow from Opera screen
- Maintenance information and warning system
- Automatic powershift to improve performance
- Selection of multi-language on control panel.
- Real time monitoring of operational parameters such as pressure, temperature, engine load
- Anti-theft system with personal code
- Possibility to register 26 different operating hours
- Rear-view, arm-view camera (Optional)
- Hidromek Smartlink (Optional)

SWING SYSTEM

Swing Motor	: Axial piston type integrated with shock absorber valves
Reduction	: 2 stage planetary gear box.
Swing Brakes	: Hydraulic multi disc type.
Swing Speed	: 12,6

FILLING CAPACITIES

Fuel Tank	: 330 L	Transmission	: 2,9 L
Hydraulic Tank	: 160 L	Engine Oil	: 27,3 L
Hydraulic System	: 318 L	Engine Cooling Sys	: 29,3 L
Swing Reduction	: 5 L	Front / Rear axles	: 14,6/18 L

ELECTRICAL SYSTEM

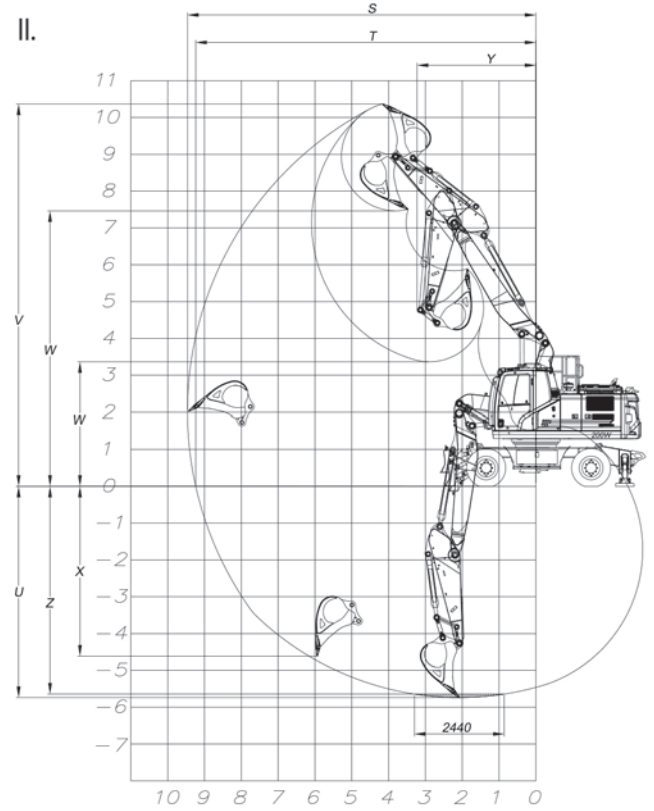
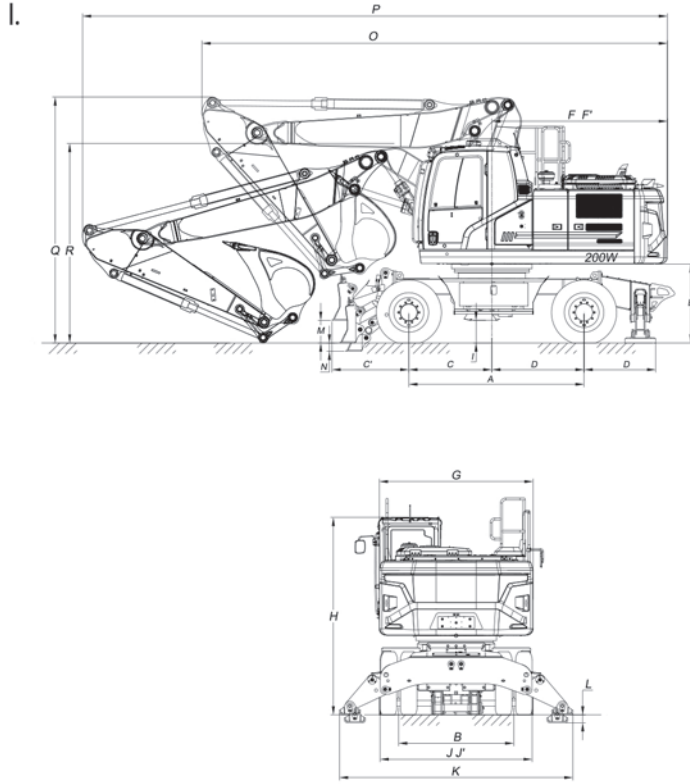
Voltage	: 24V
Battery	: 2 x 24V x 150 Ah
Alternator	: 24V / 50 A
Starting Motor	: 24V / 5,0 kW

OPERATING WEIGHT

Standard machine operating weight (200W) (Dozer Blade and Outriggers)	: 21.950 kg
Standard machine operating weight (200W) (Front and Rear Outriggers)	: 22.450 kg

Operational weight, complying with the ISO 6016 standards, includes full fuel tank, hydraulic system and other liquids, 75kg operator weight and standard equipped machine weight. Optional equipments are not included.

HMK 210wH4



I. GENERAL DIMENSIONS

Boom Dimension	5.500 mm	
Arm Dimension	*2.400 mm	2.920 mm
A - Axle Distance	2.850 mm	
B - Thread	1.914 mm	
C - Rotation Axis – Front Axle Distance	1.500 mm	
C' - Maximum Front Axle - Dozer Distance	1.140 mm	
D - Rotation Axis – Rear Axle Distance	1.350 mm	
D' - Rear Axle - Foot Distance	1.166 mm	
E - Upper Chassis to Ground Clearance	1.290 mm	
F - Counterweight Distance	2.855 mm	
F' - Counterweight Turning Radius	2.890 mm	
G - Upper Frame Width	2.500 mm	
H - Cab Height	3.220 mm	
I - Outrigger Ground Clearance	335 mm	
J - Dozer Blade Width	2.500 mm	
J' - Width at Tires	2.500 mm	
K - Outrigger Width (Overall)	3.800 mm	
L - Outrigger Digging Depth	130 mm	
M - Dozer Blade Ground Clearance	370 mm	
N - Dozer Blade Digging Depth	135 mm	
O - Overall Length/ Transport	9.510 mm	9.520 mm
P - Overall Length / Travel	7.570 mm	7.570 mm
Q - Boom Height / Travel	4.000 mm	4.630 mm
R - Boom Height / Transport	3.250 mm	3.280 mm

* Standard

II. WORKING DIMENSIONS

Boom Dimension	5.500 mm	
Arm Dimension	*2.400 mm	2.920 mm
S - Maximum Digging Reach	9.460 mm	9.910 mm
T - Maximum Digging Reach at Ground Level	9.240 mm	9.700 mm
U - Maximum Digging Depth	5.740 mm	6.240 mm
V - Maximum Digging Height	10.360 mm	10.560 mm
W - Maximum Dumping Clearance	7.460 mm	7.690 mm
W' - Minimum Dumping Clearance	3.360 mm	2.800 mm
X - Maximum Vertical Digging Depth	4.630 mm	5.000 mm
Y - Minimum Swing Radius	3.230 mm	3.130 mm
Z - Maximum Digging Depth (2440 mm level)	5.640 mm	6.150 mm

* Standard

III. DIGGING PERFORMANCE

Standard Bucket Capacity (SAE)	0,9 m ³
Bucket Digging Force (Power Boost) ISO	15.900 kgf
Arm Crowd Force (Power Boost) ISO	12.600 kgf

HIDROMEK®

FACTORY - HEAD OFFICE

Ahi Evran OSB Mahallesi Osmanlı Caddesi No:1 06935 Sincan / ANKARA / TURKEY
Tel: (+90) 312 267 12 60 Fax: (+90) 312 267 12 39
www.hidromek.com

Notice:
Hidromek has the right to modify the specifications and design of the model indicated on this brochure without prior notice.