



**SUPRA**

**ENGINE**

Make	: PERKINS
Type	: 1204F-E44TAN Diesel Engine
Number of Cylinders	: 4 in line
Bore & Stroke	: ø 105 x 127 mm
Displacement	: 4400 cc
Maximum Power	: 99,8 HP (74,4 kW) @2200 rpm
Maximum Torque	: 450 Nm @1400 rpm
High power and torque output, water cooled turbocharged diesel engine.	
Compatible with U.S EPA Tier 4 Final and EU Stage IV exhaust gas emission regulations	

**TRANSMISSION**

- Autoshift transmission for heavy duty service
- 6 forward, 3 reverse gears
- Torque convertor lock (Lock-Up)
- Torque converter with 2,38:1 stall ratio
- Electrically controlled 2 Wheel drive or 4 Wheel Drive selection
- Transmission oil cooler
- A neutral circuit allows starting only when the control lever is in neutral position for safety.

**AXLES**

- Heavy duty service type CARRARO axles
- Planetary outboard type reduction gears
- Total 16 degrees oscillation on the front axle
- Equipped with differential lock.

**TIRES**

Front / Rear	: 16,9 - 28 (14 ply rating)
--------------	-----------------------------

**CAB & HOOD**

- Widened visual angle
- Ergonomic & Aesthetic Interior Design
- 3" LCD display on front panel and 5.5" coloured TFT display on side panel
- Opera Control System
- High capacity A/C system
- Cool-box
- Improved ventilating with 15 air nozzles
- ISO Patternshifter
- ROPS and FOPS certificated cab
- Air suspension seat
- TIPSHIFT front loader joystick
- Pool type floor mats
- Removable lids
- Smart-Link
- Storage boxes for operator
- Foldable side steps
- Plastic fuel tank
- LED working lights
- LED step lights

**HYDRAULIC SYSTEM**

Closed type hydraulic system with variable displacement piston type pump, renewable flowsharing and valves with regeneration (Flowcharging)

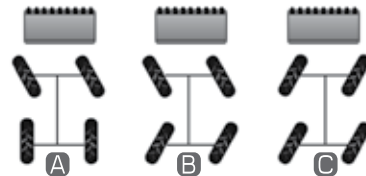
Main Pump Flow	: 163 L/min @2200 rpm
Pressure	: 250 bar

**DRIVING SPEED**

@ 2200 rpm engine speed	
1 <sup>st</sup> gear	: 6 km/h
2 <sup>nd</sup> gear	: 9 km/h
3 <sup>rd</sup> gear	: 12 km/h
4 <sup>th</sup> gear	: 20 km/h
5 <sup>th</sup> gear	: 28 km/h
6 <sup>th</sup> gear	: 40 km/h

**STEERING**

- Electrical controlled 3 different steering modes
- |   |   |
|---|---|
| A | 2 - wheel front steering for road drive                                 |
| B | 4 - wheel steering for tight turns                                      |
| C | 4 - wheel "crab" steering for close - to wall digging and ditch closing |



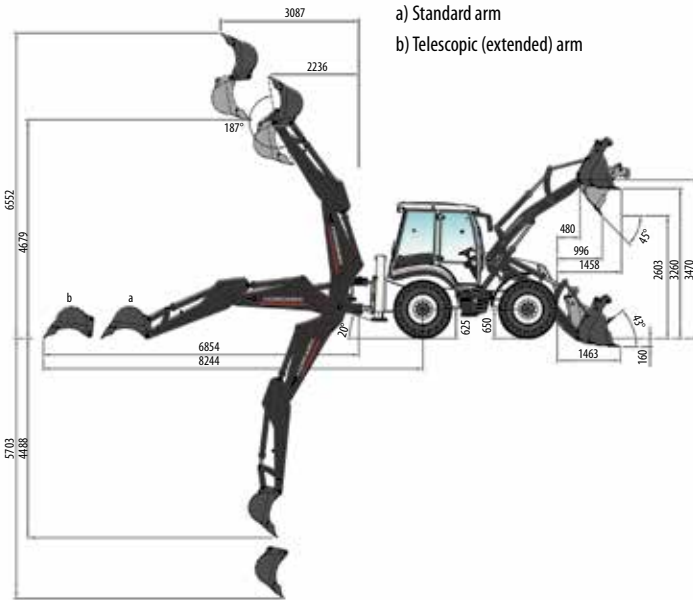
**FILLING CAPACITIES**

Engine Oil Pump	: 8,8 L
Engine Cooling System	: 22 L
Fuel Tank	: 150 L
Hydraulic Oil Tank	: 70 L
Transmission Oil	: 16 L
Front Axle Differential	: 9 L
Front Axle Hub Reducers	: 1,7 x 2 L
Rear Axle Differential	: 16 L
Ad Blue	: 19 L

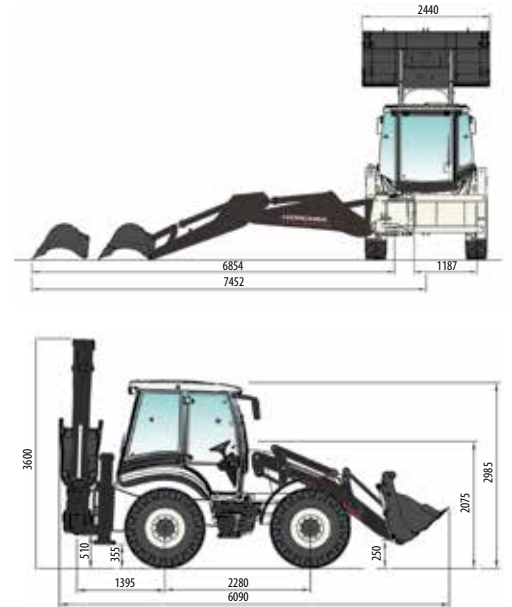
**OPERATING WEIGHT**

Operating weight (with standard equipment) : 10.070 kg

Operational weight, complying with the ISO 6016 standards, includes full fuel tank, hydraulic system and other liquids, 75 kg operator weight and standard equipped machine weight. Optional equipments are not included.



a) Standard arm  
b) Telescopic (extended) arm



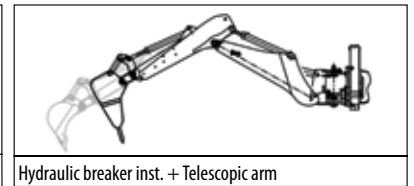
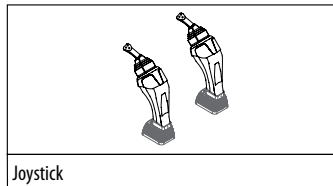
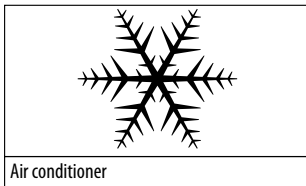
## LOADER PERFORMANCE

6 in 1 bucket capacity	1,2 m <sup>3</sup>
Max. bucket breakout force	7930 kgf
Max. loading arm breakout force	7166 kgf
Lifting capacity to maximum height	3561 kg

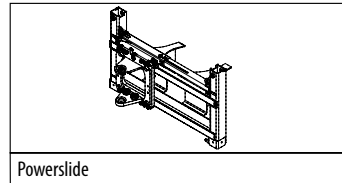
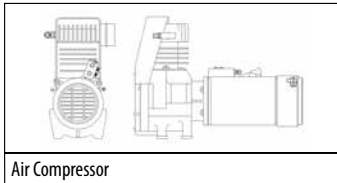
## BACKHOE PERFORMANCE

	Telescopic Arm (extended)	Telescopic Arm (retracted)
Bucket capacity	0,17 m <sup>3</sup>	0,17 m <sup>3</sup>
Max. bucket breakout force	7240 kgf	7240 kgf
Max. dipper breakout force	2536 kgf	3300 kgf

## Standart Accessories



## Optional Accessories



## Optional Attachments

